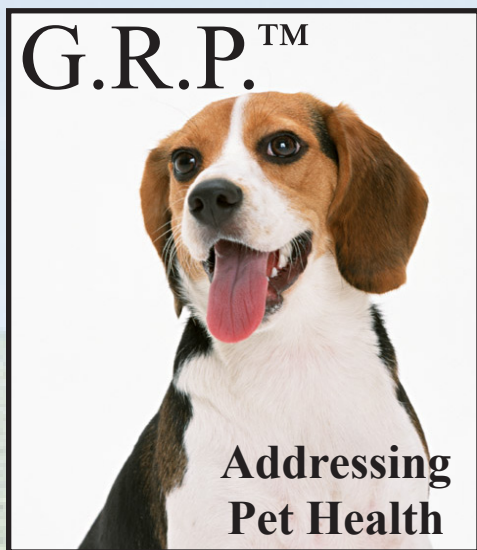
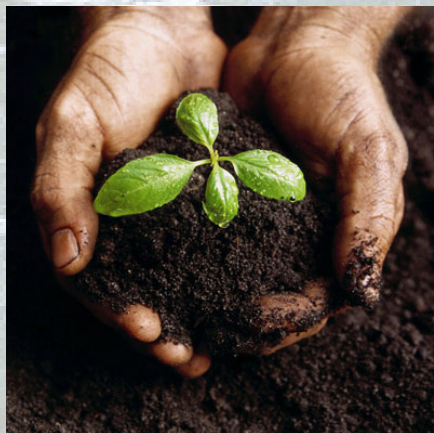


# Nutritional Supplement for All Classes of Dogs



# G.R.P.™



CERTIFIED ORGANIC  
BY ECOCERTICO



## Company Policy on Glyphosate:

In 2013, **Advanced Biological Concepts®** decided that it is morally wrong to sell glyphosate-contaminated products. The profound and consistent side-effects and symptoms could no longer be ignored.

As a result, our products are now  
**Certified Organic or GMO-Free, and Wheat-Free.**



# Glyphosate Contaminated Foods

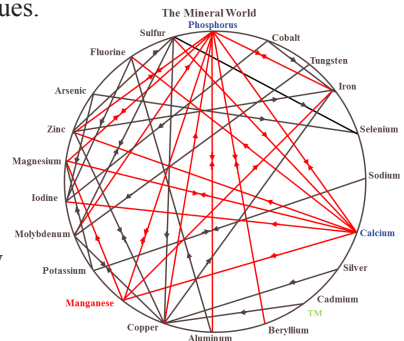
Grains today, unless they are certified organic or GMO-free, are contaminated with GMOs and glyphosate. Glyphosate contamination is known to tie-up minerals and to disrupt the normal activity of the beneficial intestinal bacteria, resulting in a variety of health problems in animals.

## Is Your Food Safe for Your Dog?

It used to be that we could generally trust that the foods we fed to our dogs were reasonably safe, if not always of the same nutritional value. That all changed with the advent of GMO technology, and we are now forced to question the safety of almost everything we eat ourselves or feed to our animals. The main culprit is **glyphosate**. Most crops in the U.S. today, including corn, soybeans, beet pulp, molasses, corn syrup and alfalfa, are contaminated with glyphosate residues.

**Glyphosate particularly reduces the availability of Manganese - an element necessary for the function of Calcium and Phosphorus.**

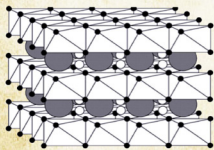
**Calcium and Phosphorus, available and in proper balance, are essential to the utilization of the majority of the other elements in the Mineral World as illustrated in the chart shown.**



The following is a simplified version of the actual mechanism by which Glyphosate affects the availability of Manganese, Calcium and Phosphorus and thus almost all the other elements as well. The actual mechanism is much more complex.

### Glyphosate Matrix

This is a visual concept not the molecular structure.



A Chelator Molecule

● Interlayer anion  
○ Mineral  
● OH anion

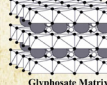
The inter-layer anion captures the cation mineral, rendering it useless.

**Glyphosate ties up:**

Manganese (Mn), Potassium (K),  
Selenium (Se) Magnesium (Mg),  
Calcium (Ca), Nitrogen (N),  
Copper (Cu), Nickel (Ni),  
Iron (Fe), Cobalt (Co)  
Zinc (Zn)

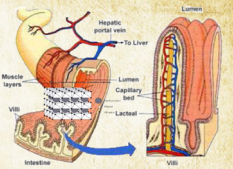


This is a visual concept not the molecular structure.



● Interlayer anion  
○ Mineral  
● OH anion

Glyphosate Matrix



**When a glyphosate contaminated plant is digested, the glyphosate matrix present in the plant is released into the gut and ties-up (chelates) the minerals in the feed ration.**

**All ABC Products are  
Certified Organic or GMO-Free, and Wheat-Free**



# A.B.C.'s G.R.P.™

## Nutritional Supplement for All Classes of Dogs

Addressing the negative effects of GMOs  
and Glyphosate

- **Increases utilization of supplemental minerals.**
- **Overcomes glyphosate-caused nutrient immobilization.**
- **Protects the quality of feed and food.**



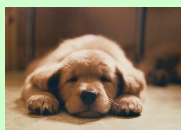
Applied Common Sense.



## A.B.C.'s G.R.P.™

Nutritional Supplement for all Classes of Dogs

Store in a cool,  
dry place.



### GUARANTEED ANALYSIS

Crude Protein (min)-----10.0 %  
Crude Fat (min)-----4.5 %  
Crude Fiber (max)-----17.0 %  
Moisture (max)-----10.0 %

Calcium (Ca) (min)-----5.0 %  
Calcium (Ca) (max)-----6.0 %  
Phosphorus (P) (min)-----1.5 %  
Copper (Cu) (min)-----500 mg/kg

Zinc (Zn) (min)-----1500 mg/kg  
Vitamin A (min)-----110,000 IU/kg  
Vitamin D<sub>3</sub> (min)-----50,000 IU/kg  
Vitamin E (min)-----550 IU/kg

**INGREDIENTS:** Dried Lactobacillus Acidophilus Fermentation Product, Organic Oat Groats, Diatomaceous Earth, Reed-Sedge Peat, Organic Linseed Meal, Dicalcium Phosphate, Calcium Carbonate, Attapulgit Clay, Organic Dehydrated Alfalfa Meal, Monosodium Phosphate, Organic Soybean Oil, Organic Dried Kelp, Bentonite, Sodium Aluminosilicate, Salt, Choline Chloride, Magnesium Oxide, Yeast Culture, Ferrous Sulfate, Zinc Sulfate, Sodium Sulfate, Potassium Chloride, Manganous Oxide, Zinc Hydroxychloride, Ascorbic Acid, Vitamin E Supplement, Manganese Hydroxychloride, Manganese Sulfate, Basic Copper Chloride, Organic Garlic, Organic Fenugreek, Niacin, Sulfur, Citric Acid, Folic Acid, Potassium Sulfate, Magnesium Sulfate, Riboflavin, Vitamin A Acetate, Organic Apple Cider Vinegar, Copper Sulfate, Organic Feed Grade Dried Milk, Calcium Pantothenate, Organic Egg Product, Pyridoxine Hydrochloride, Organic Cloves, Organic Lecithin, Organic Barley, Vitamin D3 Supplement, Cobalt Sulfate, Beta-Carotene, Calcium Hydroxide, Vitamin B12 Supplement, Biotin, Thiamine Mononitrate, Organic Dandelion, Ethylenediamine Dihydride, Organic Parsley, Magnesium Chloride, Organic Althea Root, Organic Dried Tomato Pomace, Yucca Schidigera Extract, Organic Horseradish, Organic Licorice, Organic Sweet Orange Peel, Organic Aloe Vera Gel Concentrate, Organic Peppermint, Organic Calendula, Organic Ginger, Organic Coconut Oil, Organic Sage, Organic Common Fennel, Organic Thyme, Organic Lemon Grass, Organic Elder Flowers, Cobalt Carbonate, Organic Papain, Organic Basil, Organic Violet Leaves, Organic Coconut Flour, Organic Juniper Berries.

**DIRECTIONS For Dogs:** (5cc / 1 tsp Scoop Included)  
Feed 1 Scoop for every 40 lbs (18.1 kg) of body weight.

## 100 Total Scoops

Manufactured For:  
Advanced Biological Concepts®  
P.O. Box 27 • Osco, Illinois 61274-0027  
Phone: 800-373-5971 • Fax: 888-770-0735  
jgh@a-b-c-plus.com • www.abcplz.biz  
Certified Organic by: ECOCERT ICO, LLC.

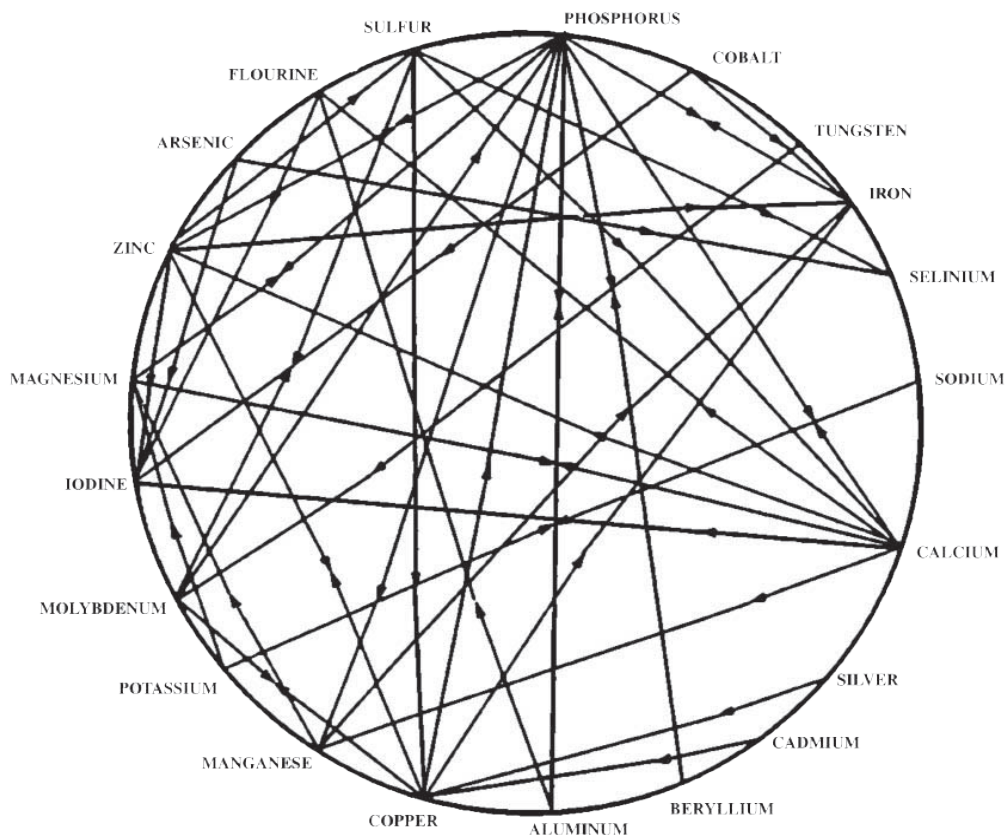
PD1311-20

# A327

**Net Weight 12 ounces (340.2 g)**

Disclaimer: This product is formulated to meet the requirements of the USDA National Organic Program. Advanced Biological Concepts® accepts no responsibility for performance failure or misuse of this product, or changes of organic protocol that we are not aware of.

# The Mineral World



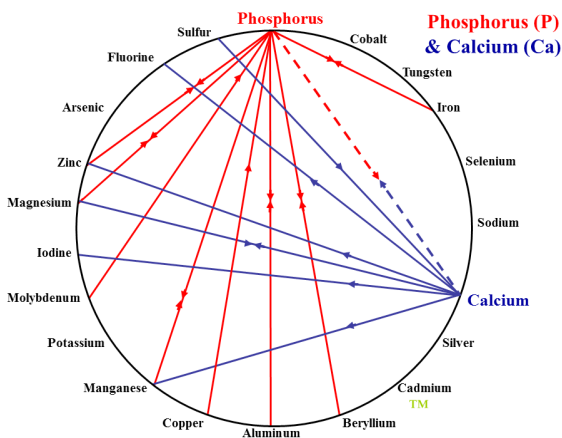
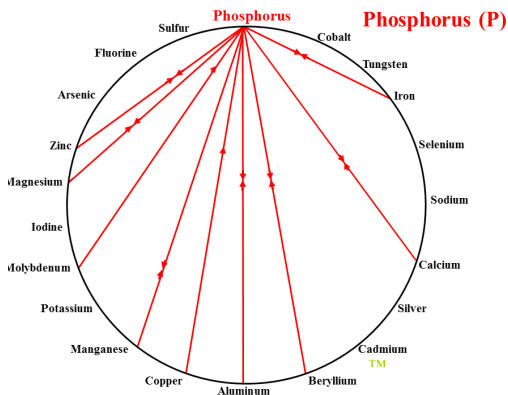
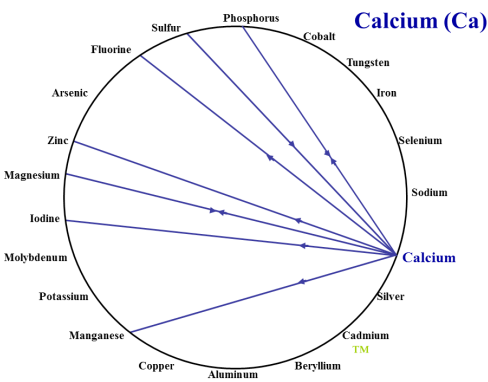
## Relationship Between Minerals for All Livestock

Based on research by several investigators, these mineral relationships appear to be well established.

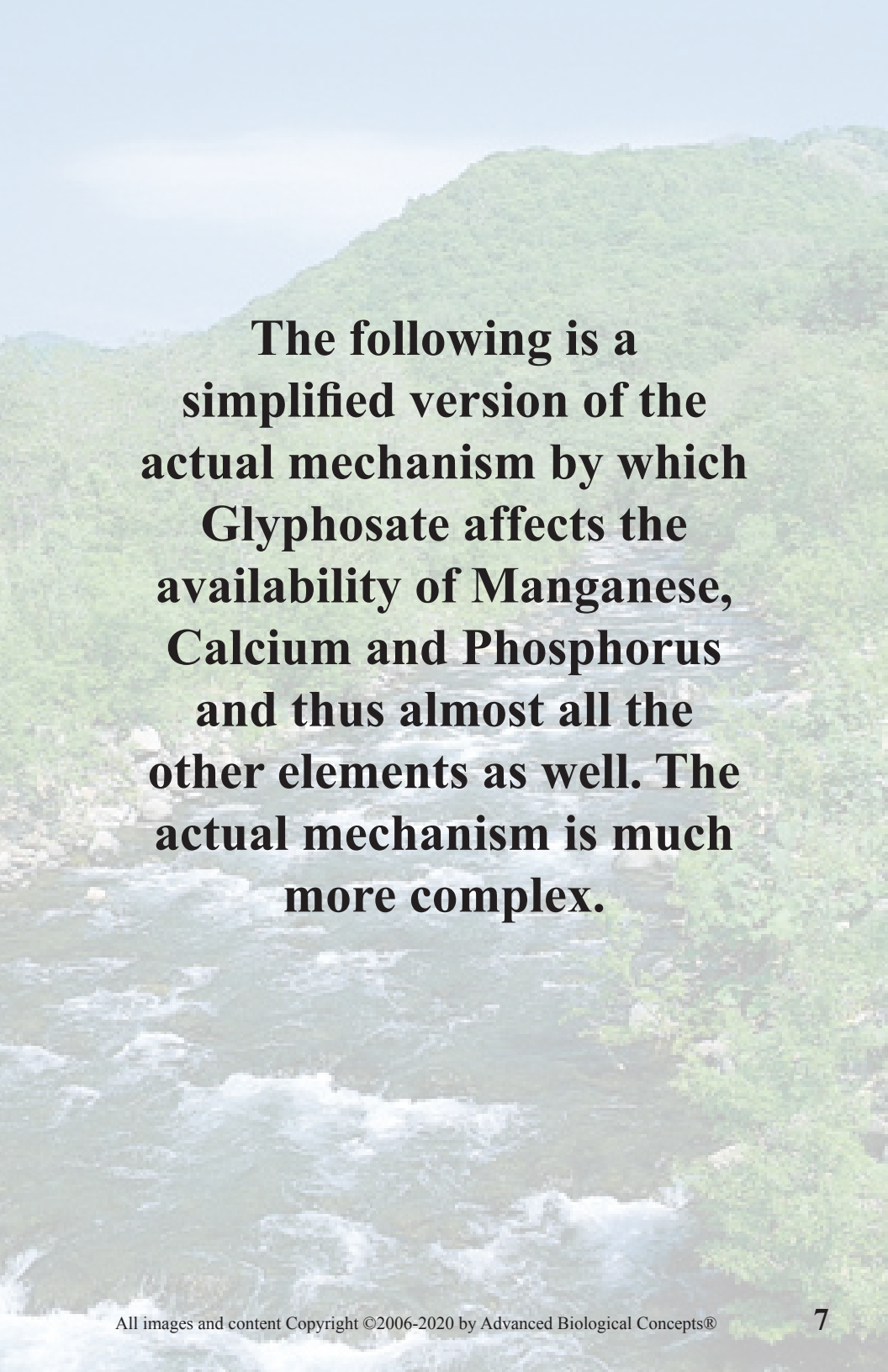
### How to Interpret the Mineral Wheel:

If a mineral has an arrow pointing to another mineral, it means a deficiency of that mineral or interference with its metabolism may be caused by excesses of the mineral from whence the arrow originates.

# Calcium and Phosphorus are major elements that everyone seems to know about.



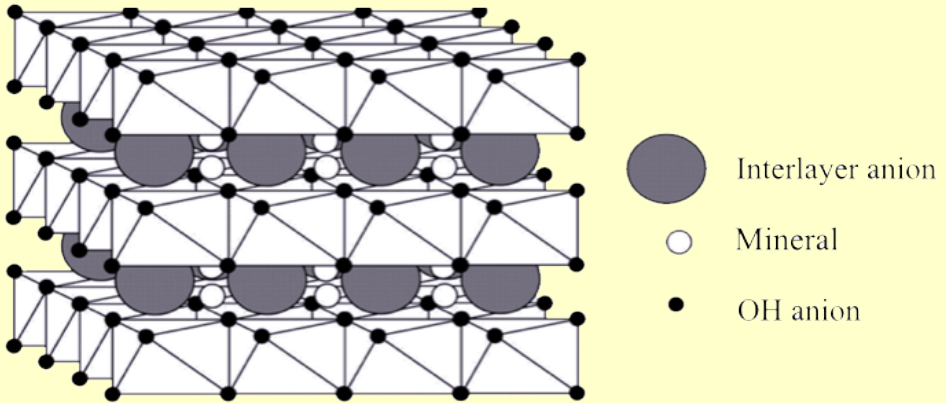
Together they have an effect on almost all elements in the Mineral World.



**The following is a simplified version of the actual mechanism by which Glyphosate affects the availability of Manganese, Calcium and Phosphorus and thus almost all the other elements as well. The actual mechanism is much more complex.**

# Glyphosate Matrix

This is a visual concept not the molecular structure.



The inter-layer anion captures the cation mineral rendering it useless.

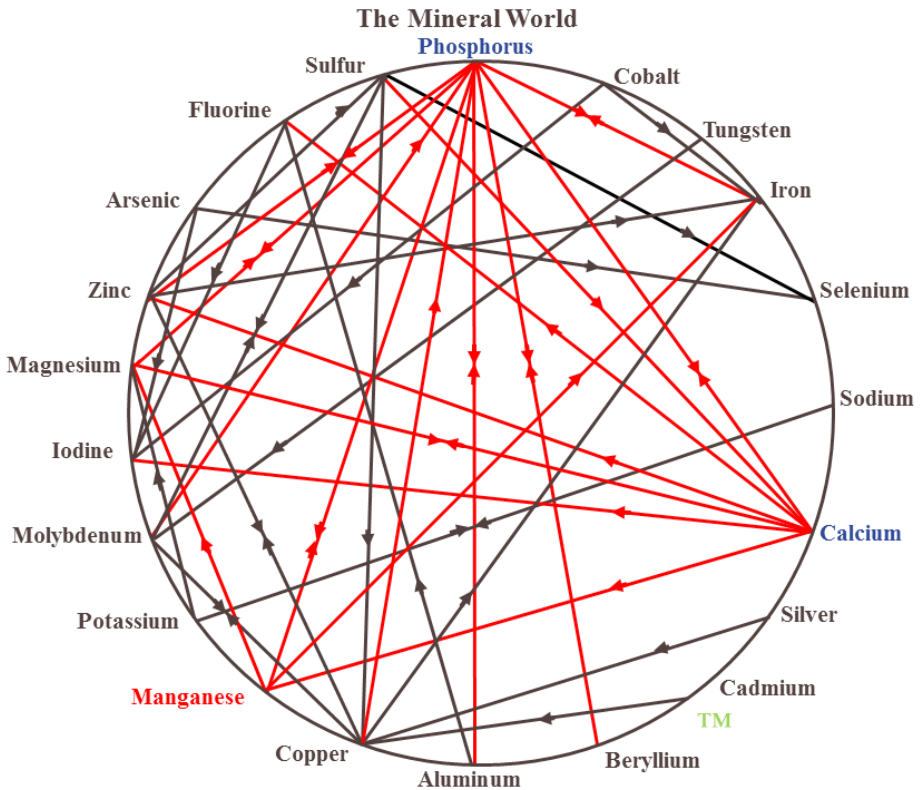
## Glyphosate ties up:

**Manganese (Mn),  
Selenium (Se)  
Calcium (Ca),  
Copper (Cu),  
Iron (Fe),**

**Potassium (K),  
Magnesium (Mg),  
Nitrogen (N),  
Nickel (Ni),  
Cobalt (Co)  
Zinc (Zn)**

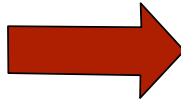


**Glyphosate particularly reduces the availability of **Manganese** - an element necessary for the function of **Calcium and Phosphorus**.**

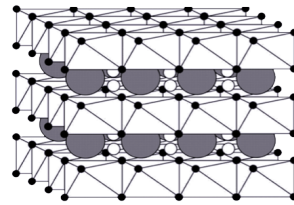


**Calcium and Phosphorus, available and in proper balance, are essential to the utilization of the majority of the other elements in the Mineral World as illustrated in the chart shown above.**

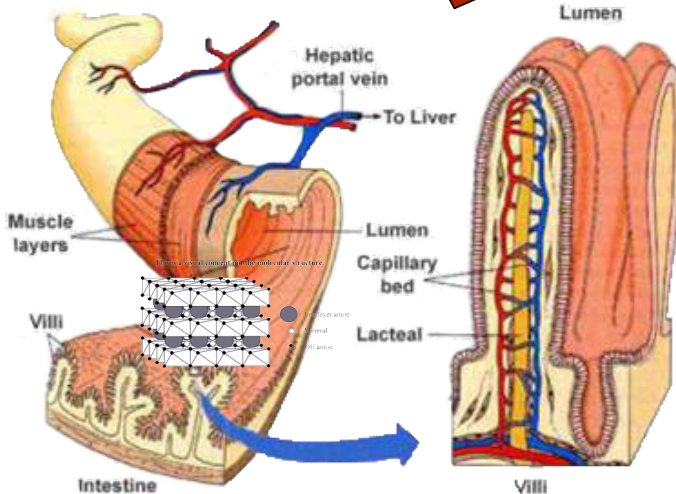
## **Mineral World**



This is a visual concept not the molecular structure.



- Interlayer anion
- Mineral
- OH anion



**When a glyphosate contaminated plant is digested, the glyphosate matrix present in the plant is released into the gut and ties-up (chelates) the minerals in the feed ration.**

**Notes:**

**Visit our website to order!**

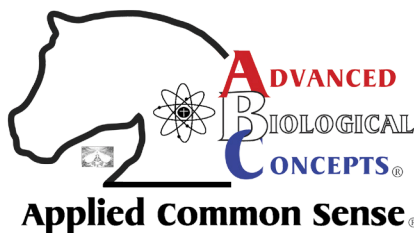
**www.abcplus.biz**



## Company Policy on Glyphosate:

In 2013, **Advanced Biological Concepts®** decided that it is morally wrong to sell glyphosate-contaminated products. The profound and consistent side-effects and symptoms could no longer be ignored.

As a result, our products are now **Certified Organic or GMO-Free, and Wheat-Free.**



**Advanced Biological Concepts®**  
P.O. Box 27 • Osco, Illinois 61274-0027  
(Phone) 800-373-5971 • (Fax) 888-770-0735  
[jgh@a-b-c-plus.com](mailto:jgh@a-b-c-plus.com) • [www.abcplus.biz](http://www.abcplus.biz)